



Shan Pu

Hall effect Joystick **ZHJB**



General Specifications

Power input	:DC 5V \pm 0.5V
Output	:Analog 0~5V
Type	:3 axes, X-Y axes and Z axis (rotary)
Operation life	:X-Y axes 5 million cycles min. Z axis 1 million cycles min.
Operating Temperature	:-20 °C ~ +65 °C

Feature

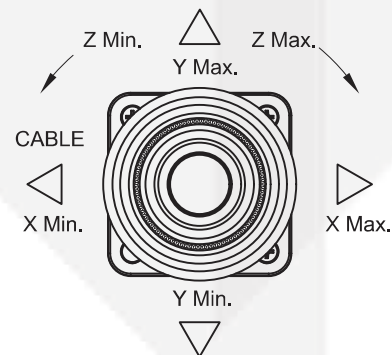
- X, Y and Z axes joystick plus push button switch
- Long operating life
- panel mounting
- water-proof

Application

- Industrial equipment
- Medical equipment
- Surveillance & Security Cameras
- DVR/PTZ control

Configuration & Pin define

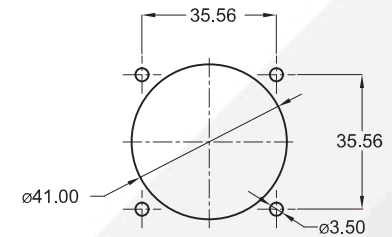
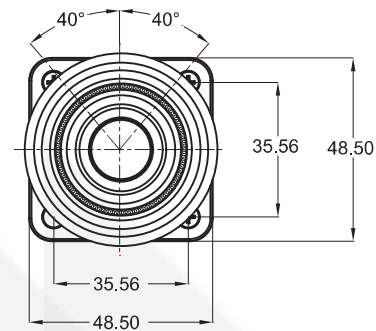
→	DC 5V(RED)
→	GND(BLACK)
→	X OUTPUT(BLUE)
→	Y OUTPUT(YELLOW)
→	Z OUTPUT(GREEN)
→	SW(WHITE)
→	SW(BROWN)
→	N/C



Pins define

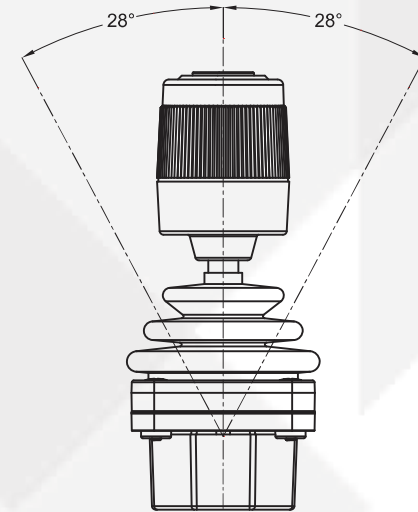
Dimension & Panel cutting recommend

ZHJB02-D2



PANEL MOUNTING

OPERATING ANGLE



Dimension shown in mm. Specifications and availability subject to change without notice.